



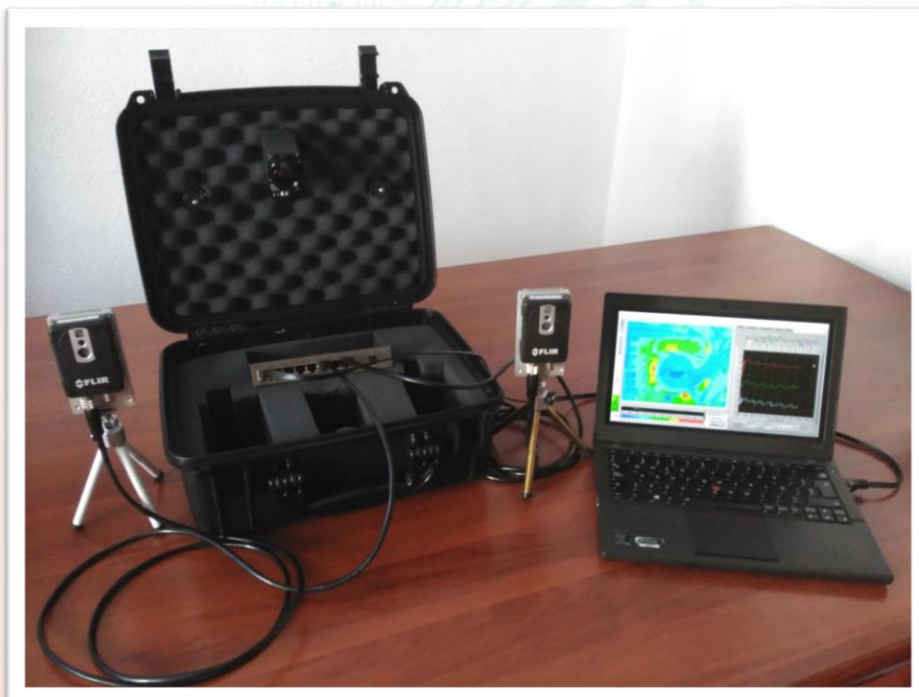
Portable monitoring kit

Thermographic supervision where needed at all times

The portable configuration for temperature monitoring allows controlling processes in a temporary, fast and simple way without the implications that a permanent installation would have.

Especially suitable for maintenance services or research / process optimization, it allows thermographic monitoring to be carried to the point where it is needed.

The kit can be used directly from the case by orienting the cameras **FLIR** from the fixed Whitworth screw plate or by deploying the different elements and using the 5-meter extensions and the two table-top tripods included.



Official Distributor



Portable monitoring kit

The kit consists of a heavy-duty carrying case integrated with two or three thermographic cameras of models **FLIR** Ax8, A35 or A65 (configuration to be defined), power supply, and a portable PC with the license of the **bcbMonitor**® software pre-installed.

With the portable monitoring kit you have full autonomy to perform monitoring in teams or processes for as long as it is considered sufficient, and then move it to another scenario to proceed with a new monitoring.

All the necessary elements are protected and placed securely inside the internal insulation of the suitcase. It is only required to have power supply at 110/220 VAC in the vicinity.



The kit includes:

- Selected camera models **FLIR**
- High resistance transport case prepared to house the other elements.
- A personal computer with 11" screen, processor i5 or higher, 300 Gb hard drive.
- Four-input PoE switch that is powered at 110/220 VAC.
- 1 meter cables between cameras and computer.
- 5-meter extensions for positioning the cameras outside the transport case.
- Two (2) table tripods of high resistance and stability.
- PC support platform during use with the suitcase open.

bcb

Fernando el Católico, 11
28015 Madrid
Tel. (+34) 91 758 00 50
info@bcb.es
www.bcb.es

bcb

Homero 538-303.
Polanco V, Sección
Del. Miguel Hidalgo
11570 México DF, México
Tel. (+52) 55-91 83 05 47 Ext:7547
Sucursal Monterrey. Tel. (+52) 81-21 33 82 85
info@bcbmex.com
www.bcbmex.com

